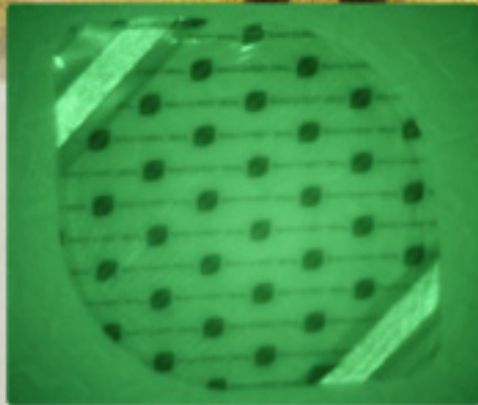


# SAM<sup>®</sup> CHEST SEAL

Occlusive adhesive dressing for open chest wounds



**SAM** MEDICAL  
PRODUCTS<sup>®</sup>  
sammedical.com

customerservice@sammedical.com  
Tele: 800.818.4726 | Fax: 503.639.5425



Made in USA

# SAM<sup>®</sup> CHEST SEAL

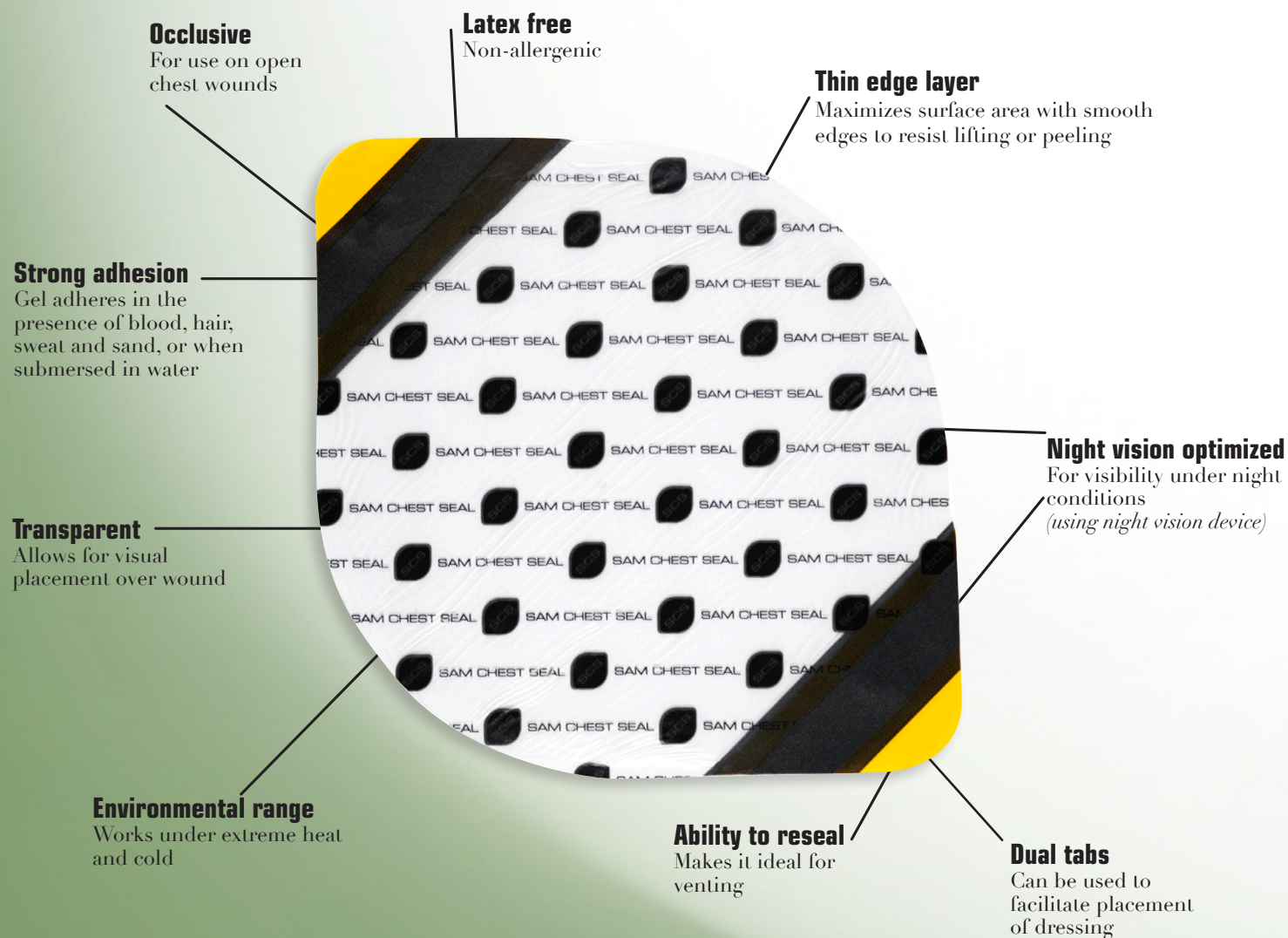
The SAM<sup>®</sup>CHEST SEAL is our new occlusive dressing designed for treating open chest wounds, a life-threatening situation that could lead to tension pneumothorax. This is the second leading cause of preventable death on the battlefield.

The SAM<sup>®</sup>Chest Seal answers the long-standing need for an adhesive strong enough to adhere to skin that is subject to sweat, blood, hair, sand, or water. The featured hydrogel adhesive also allows for the ability to reseal, making it ideal for venting.

The SAM<sup>®</sup>Chest Seal also addresses other military needs including a large coverage area, two dressings per pouch, and the inclusion of a highly and rapidly absorbent 5" x 9" pad to help clean the wound.

The product packaging was addressed as well. By providing a peelable pouch in addition to tear notches, both sides of the pouch can provide the medic with a sterile field. With its ultimate use in global combat zones, we also optimized the SAM<sup>®</sup>Chest Seal for night vision. Both the packaging and chest seal can be viewed under no light conditions with the use of a night vision device.

The SAM<sup>®</sup> Chest Seal is proudly made in the USA.



The SAM<sup>®</sup> Chest Seal is also biocompatible (cytotoxicity, irritation, and sensitization tested per ISO 10993), sterile (validated per ISO 11137-1:2006, ISO 11137-2:2007, ISO 11737-1:2006, and ISO 11737-2:2009), and meets MIL STD 810G.

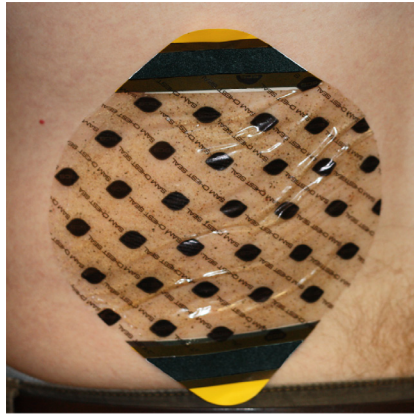
# STRONG ADHESION

*One of the many features that sets the SAM Chest Seal apart from the competition.*



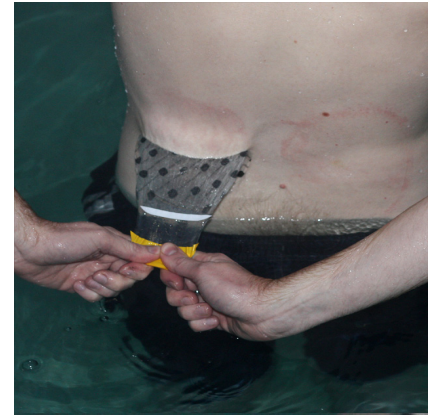
## Adhesion to body hair test

Image shows superior adhesion to body with ample hair.



## Sand environment test

Image shows application with 2.9 g of sand applied to dressing to simulate application in desert environment.



## Water submersion test

Image shows adhesive strength after 12 minutes of water submersion.

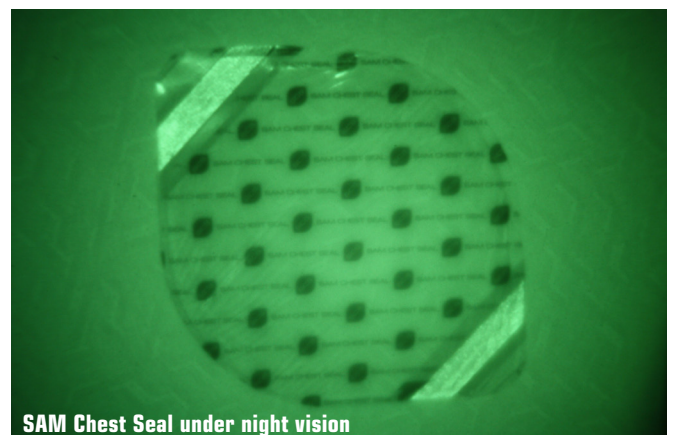
# NIGHT VISION OPTIMIZED

*SAM Chest Seal and packaging are visible under night vision*



## Under no light conditions

Pouch, dressing backing, and tabs provide optimal contrast for visibility in normal light, low light, and night conditions (using night vision device). See night vision application video at [sammedical.com](http://sammedical.com).



**SAM Chest Seal under night vision**

# PREMIUM PACKAGING

## Absorbent 5" x 9" pad included

Contains highly absorbent pad for cleaning wound area; pad absorbs 151.7 mL of fluid in five seconds

## Vacuum packed

For reduced mass

## Tear or peel pouch

Rugged foil pouch can be peeled to provide a sterile field



## Technical Data

- Two chest seals per pouch: 9.2" x 7.6"
- One 5" x 9" pad per pouch
- Total area of combined chest seals: 85 sq. in.
- Total area of sterile packaging after peeling open pouch available for use: 126 sq. inches of sterile surface
- Total weight of pouch, pad, and dressing: 2.1 oz.

## About SAM Medical Products

SAM Medical Products® is a developer and manufacturer of innovative medical products used for emergency, military, and hospital care. Our products include the widely used SAM® Splint, SAM® Chest Seal, SAM Pelvic Sling™, Soft Shell® Splint, CELOX™ line of hemostatic agents, BursaMed® line of shear and friction relieving dressings, and Blist-O-Ban® blister prevention bandages. For over 25 years, SAM Medical Products has represented innovation and quality to the medical professional. More information can be found at [sammedical.com](http://sammedical.com).



## Video Resources

- View the SAM Chest Seal at: [www.sammedical.com](http://www.sammedical.com)
- Videos also available on [youtube.com](https://www.youtube.com)